



Haardox Fabrication Sets New Standards

Shaping Industries with Expertise and Precision



■ About SLVRHI

A company founded by dedicated professionals striving to excel in the production of wear-resistant liners, parts, and fabrications, alongside providing machined parts and industrial fabrications for the mining, cement batching, and mixing machine manufacturing sectors within our nation.

- Established with experience of more than 12 years in the line by the promoters
- Achieved and further pursuing the market by supplying wear resistant liners, machined liners and fabs with a great quality products.
- Direct Importer of Wear Resistant Material i.e., Everhard from Japan (JFE-EHC) from the starting. Handling also Hardox,Quard, Rockstar and Rockhard.
- Has a wide range of market support in the line of RM, fasteners, tools and tackles
- We are now supporting our OEM customers in their requirement of all types Wear Resistant related liners, parts and fabs along with secondary processing of small, medium and heavy fabrications according to their designs and requirements with stringe quality control.





■ Our vision

We are an ISO 9001:2015 certified company

Our customers are the cornerstone of our company, providing us with strength and support. It is our primary responsibility to supply the required parts to our customers with dedication and efficiency, ensuring quality, cost-effectiveness, and timely delivery.

We harness technical excellence and experience to motivate our dedicated team, ensuring their security and ownership in serving our esteemed customers' needs. We execute customer requirements with meticulous attention to their standards, utilizing relevant raw materials, engineering, processes, quality control, and supply chain management.

In the event of any post-supply issues, we are committed to taking immediate action to minimize any potential damage to our valued customers. We strive to maintain a leading edge in industry standards, technology, and market automation, providing our esteemed customers with the utmost cost-effectiveness and professionalism.

■ Our mission

We are dedicated to staying at the forefront of industry standards, education, technology, and automation. Our goal is to consistently deliver cost-effective and professional support and services to our clients, whenever possible.

■ Quality policy

At **SLVR Haardox Industries**, our team is committed to ensuring complete customer satisfaction through dedicated efforts in every aspect of our operations, including meticulous planning, cost-effective production, and the delivery of top-quality products. We are dedicated to continuously improving our processes at every level of production management.

Furthermore, we pledge to prioritize the reduction of both external and internal issues, conducting thorough risk analyses to mitigate any potential impacts on our operations.





■ Infrastructure

Our unit-2 measuring 7500 sq. Ft area with 80 HP power with 5 ton EOT crane houses:

Win Arc **Fibre Laser** of 6 kw with bed size of 3100 x 8100 mm, which can cut upto 20 mm and another Win Arc High Definition Plasma machine of bed size 3100 x 14000 mm, which can handle upto 30 mm plasma cutting and 300 mm Oxyfuel cutting.

A CNC press brake of 500 t capacity (Hindustan Hydraulic Make), which can handle of 6200 mm length of forming material upto 12 mm thick

A CNC press brack of 200 t (Tailuft - Taiwanese company),

2 Radial drilling machine of drilling capacity of upto 65 dia and tapping capacity of upto 38 mm.

Taiwan make NC band saw.

A conventional lathe

Our unit 1 measuring 5000 sq. Ft area with 65 HP power with 5 ton EOT crane houses and unit 3 measuring 7000 sq. Ft area with two 5 ton EOT crane with 65 HP power:

6 Welding platforms measuring 2m x 6 m – 3 nos, 2m x 9 m – 1 no and 1.5 M x 6 m – 2 no

All the above 6 platforms are equipped with 2 each mig welding machines of esab and ador makes.

All relevant power tools for each welding platforms are available.

A technically qualified and efficient team in production, quality, despatch, admin and accounts with a leader in respective division is driven by the ceo for supporting our esteemed clientele.

■ Our unit 1 and office

UNIT 1



■ Our works and office

UNIT 1



■ Our unit with plasma and fibre laser profile cutting and CNC forming machine



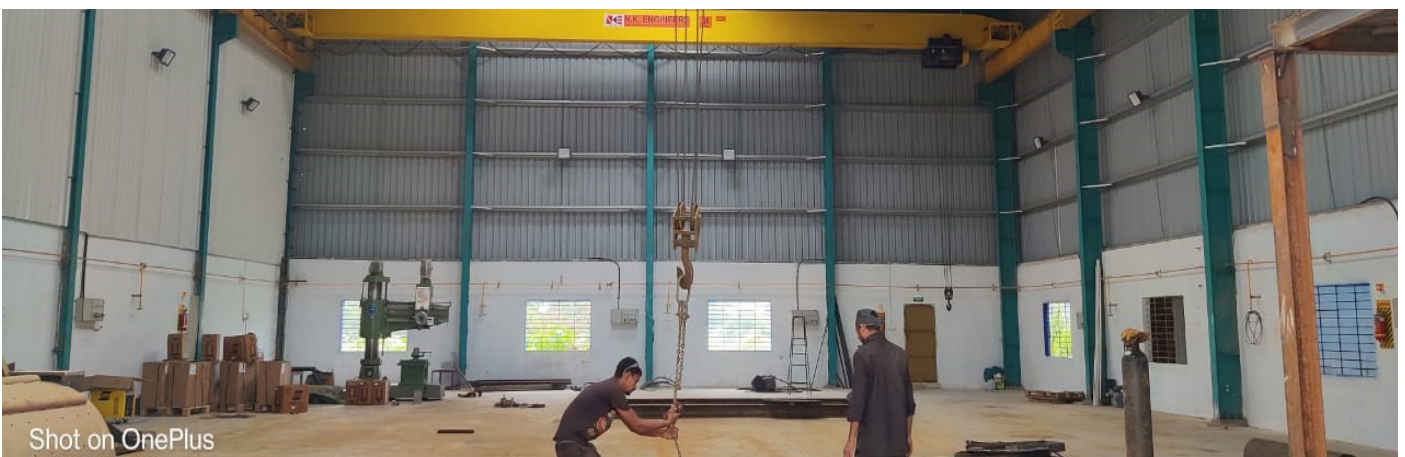
■ Our unit 2nd high definition plasma machine

UNIT 2



■ Our unit 3 for fabrication with two 5 t EOT cranes

UNIT 3



■ Infrastructure

Our associated unit measuring about 11500 sq. Ft area next to our unit consisting 10 ton eot crane, 5m x 6m x 10m blasting facility, primer and painting facility with air drying



■ Machining infrastructure

Our associated machining centre



■ Infrastructure

Our second unit spans 5000 square feet and is equipped with 65 HP power and a 5-ton EOT crane for various fabrications. It includes an administrative office with a conference room and cabinet space for production heads, quality heads, and promoters. The unit also houses a radial drilling machine with a capacity of 45 mm and another drilling machine with a 32 mm diameter capacity. Additionally, there are six CO2 welding machines with capacities of 400 and 600 amps for in-house welding needs.

For cutting structurals up to 200 mm, there is a bandsaw machine available. Various power tools such as grinding machines, buffing machines, cut-off saws, and other tools are provided to meet fabrication requirements. The quality department is equipped with instruments including a 1 x 2 m surface table, a height gauge of 600 mm, measuring tapes, and vernier calipers.

Another unit measuring 1200 square feet accommodates a 30 HP power supply and houses our BFW CNC milling machine. There is also a 150 square feet office space for the staff of this unit. Plans are underway to introduce a conventional lathe, conventional milling machine, bandsaw, and a small radial drilling machine to transform this unit into a tool room to meet the in-house requirements of SLVRHI.

■ Machining infrastructure

An associated unit spanning 3000 square feet houses a Makino VMC with a bed size of 800 x 1500 mm and a Z axis of 700 mm from Morie Seiki, along with an 800 x 800 x mm 3-axis BFW VMC.

Additionally, there is another VMC from Mitsubishi with a bed size of 800 x 700 mm and a Z axis of 450 mm. Two turning centers from Jyothi, with a check diameter of 300 mm, are also included in this unit.

An office space of 200 square feet is designated for accommodating the staff of this unit. Furthermore, the unit is equipped with a small drilling machine and a manual forklift with a capacity of 1.25 tons for loading and unloading machining jobs.





Rollers and pulleys infrastructure

An associated unit covering approximately 4000 square feet is dedicated to the manufacturing of MS rollers, rubber-lined rollers, and idlers. It features specialized, in-house quality control checks for water resistance, dust resistance, and load-bearing capabilities.

Within the same unit, we will produce head pulleys and tail pulleys to support various applications, without Fenner Hubs, thus accommodating all requirements.

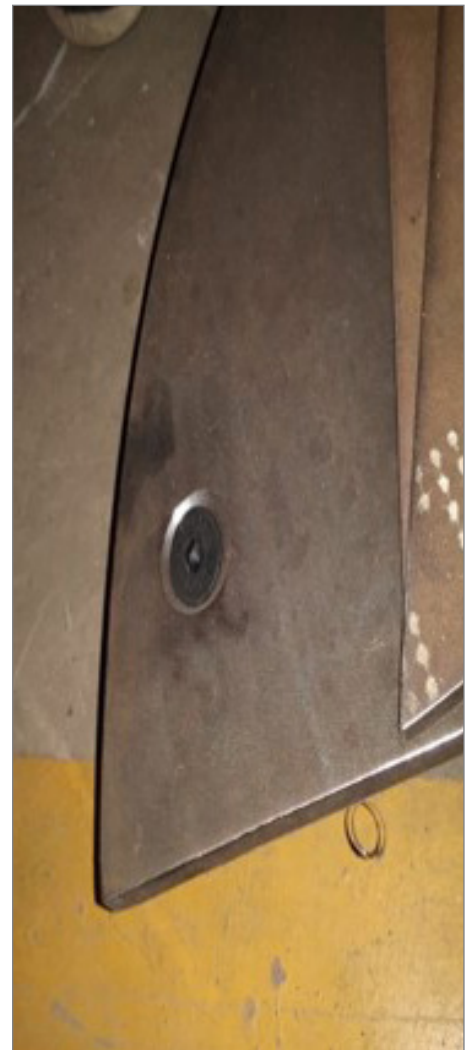
Plans are underway to install a fiber laser for cutting pipes and structural elements needed for the aforementioned processes. Additionally, the unit already has an associated painting facility in operation.

Our strong team as pillars of SLVRHI

A fully dedicated and skilled team of 35 individuals comprises our workforce. This includes the CEO and supporting partners serving as company heads, a COO leading a team of production managers, quality managers, production supervisors, quality inspectors, machine operators, fitters, welders, and shop floor assistants.

We also have administrative and financial staff responsible for managing HR, procurement, accounting, and administrative tasks.

■ Our capabilities as jobs in wear resistant material



■ Our capabilities as jobs in mild steel



■ Our capabilities as jobs in mild steel



■ Our capabilities as jobs in mild steel fabrications followed by machining



Total Structure weight is 30000 Kgs

■ Few of our reputed clientale



TEREX INDIA PVT LTD. HOSUR

TEREX MALAYSIA SDN BHD, MALAYSIA

Terex Corporation Coalville (UK)

TEREX UK AND TEREX DURAND (NORTH AMERICA)

AJAX ENGINEERING PVT. LTD., DODDABALLAPUR

PROMAN (THROUGH NASCENT VENTURES MHE PVT LTD) –
Screw Conveyor blades and buckets

GMMCO Limited

Wevin Pvt Ltd., Bengaluru

Alinda Gears Technologies Pvt Ltd (German Company)

IPA Pvt Ltd., BANGALORE

SAGAR FOUNDRY for vibrating machine and others.



Regd Office

No.43, 11 A Cross, Thigalarapalya Main Road, Peenya 3rd Stage, Bangalore – 560 058.

WORKS

Unit 1 : SY. No. 125, Shed 4B, Behind Kempaiah Garden & Peenya BMTC Bus Depot,
4th Phase, Peenya 2nd Stage, Bangalore – 560 058.

Unit 2 : SY. No. 129, Shed No. 36, Kempaiah Garden, 4th Phase, 2nd Stage,
Peenya, Bengaluru – 560 058.

Unit 3 : SY. No. 125, Next to Shed 4A, Behind Kempaiah Garden, 4th Phase, 2nd Stage,
Peenya, Bengaluru – 560 058.

+91 98454 55411 | E-Mail: sales@slvrhaardox.in | www.slvrhoardox.in